



Inspired by Technology. Proven by Experience.™

Pouches for Identification Documents

Protection for Printed IDs

Pouches are an excellent means of protecting photo ID cards. They offer a durable, low-cost alternative to hard cards, yet they still include many hard card features that prevent tampering and forgery. Constructed of durable polyethylene-coated polyester laminate, the pouches protect any form of ID document printed on Teslin, paper, or card.

All OpSec pouch materials are available with a mix of security features, which can be registered or unregistered. Options include OpSec Advantage™ trimodal images, IR features, and OVD technologies, as well as three-color UV and OVI printing.

OpSec offers two types of pouches, butterfly and edge-sealed. Both styles accommodate all security option

PRODUCT FEATURES

- Sophisticated construction for super-durable cards
- Protection against duplication and re-use
- Sequential numbering
- Magnetic stripe technology
- Manufactured under strictly secure processing and inventory management

SECURITY FEATURES

Overt

- OpSec Advantage™ trimodal image
- HRI (transparent OVD)
- OVD (optically variable device)
- OVI (optically variable ink)

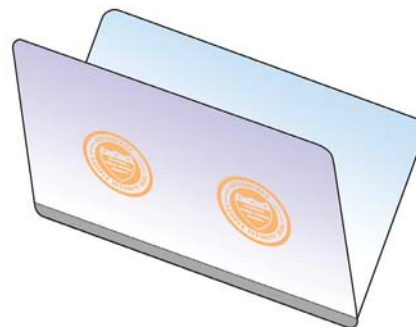
Covert

- Three-color UV printing, invisible in ordinary light
- IR features

OpSec can provide preprinted Teslin inserts with the following security features:

- Fine-line printing
- Four-color process printing
- Rainbow printing
- Guilloche patterns
- Microtext

Butterfly pouches consist of die-cut polyester film that is scored along the dividing line for accurate folding. Optional serial numbering on the inner surface of the butterfly pouches supports antifraud and inventory security efforts; serialization can also facilitate correlation with similarly numbered pouch contents. This pouch format is ideal for edge-to-edge lamination and for protecting Teslin inserts.



Edge-sealed pouches incorporate prefolded heat seams at the folded edge. The location of the seam is application-specific. Organizations frequently choose this format of pouch to protect paper inserts and both plastic and paper documents.